



## **Annex 3 Key Social Sensitivities associated with the Project**

(1) Sub-project 1 - New 400/110 kV SS Valandovo with connection to the existing 400 kV and 110 kV transmission network

Existing 110 kV OHL from Vlandovo to Miletkovo (arable land uses in vicinity to the line)



- existing towers no. 12-13, direction towards Miletkovo



- existing towers no. 15-16, direction towards Miletkovo





- existing towers no. 12-13, direction towards Valandovo



- existing tower no. 20, at vicinity to SS 'EVP' Miletkovo



- existing tower no. 20, at vicinity to SS 'EVP' Miletkovo



- view to SS 'EVP' Miletkovo



Corridor of a new 110 kV OHL from Miletkovo to new 400/110 kV SS Valandovo (arable land uses in vicinity to the corridor)



- view towards existing SS 'EVP' Miletkovo



- view towards new 400/110 kV substation



(2) Sub-project 2 - Reconstruction of the existing 110 kV OHL Valandovo – Strumica

Social sensitivities in urban zones of Strumica – OHL section near entrance to SS Strumica 2



- OHL entrance to urban zone of Strumica







- In immediate proximity to SS Strumica 2, residential properties within the OHL safety corridor



- In immediate proximity to SS Strumica 2, residential properties within the OHL safety corridor



Social sensitivities in urban zones of Strumica – OHL section from SS Strumica 2 to SS Strumica 1



- Residential property below the line

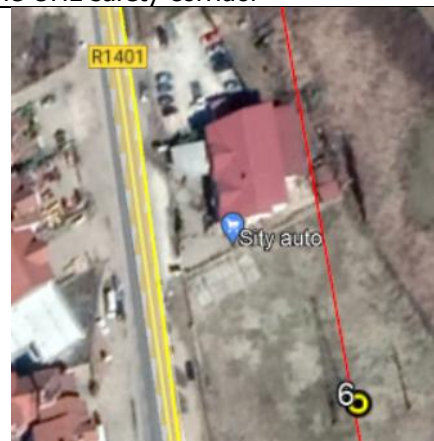




- Commercial properties (waste collection and treatment facility) below and immediate vicinity to the line, within the OHL safety corridor



- Commercial property in immediate vicinity to the line, within the OHL safety corridor



- Commercial property in immediate vicinity to the line, within the OHL safety corridor





- Residential and commercial property in immediate vicinity to the line, within the OHL safety corridor



- Commercial properties, within the OHL safety corridor, in immediate proximity to SS Strumica 1